

A large, weathered stone stands prominently in a forest of tall pine trees. The stone is dark and textured, with some moss or lichen growth. The forest is dense with tall, thin trees, and the sky is a clear, bright blue. The overall scene is peaceful and natural.

# COTHIEMUIR HILL

## ABERDEENSHIRE

WOODLAND BURIAL GROUND

Leedam  
NATURAL HERITAGE

# COTHIEMUIR HILL

## WOODLAND BURIAL GROUND

The woodland at Cothiemuir Hill is a peaceful, natural place. Somewhere special to spend time listening to the birdsong in the surrounding woodland, admiring the Neolithic stones, and taking in the view towards Bennachie. A place of escape, away from it all.



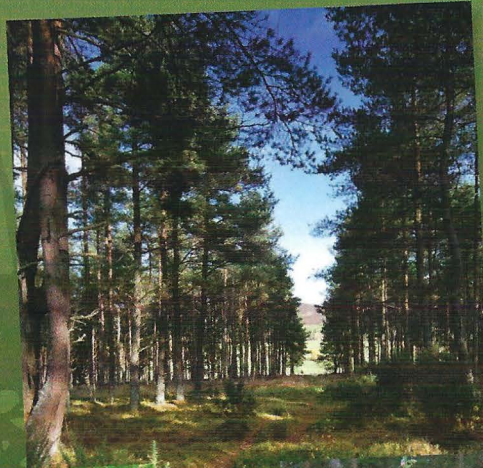
## In the peace of wild things

The natural burial ground is managed as a central part of the historic Forbes Estate, located within the beautiful Strathdon landscape. Native wild flowers grow around the burial glades, wildlife inhabits the woodland and surrounding hills, which all make for an inspiring and enchanting place to be.



## Memorial stones

Small, locally sourced memorial stones are permitted on graves; you can propose the use of a naturally-shaped river or field stone you have chosen. To do so, please complete a memorial application form.



## Flowers

Instead of the usual arrangements, try a simple posy of flowers from your garden, a couple of leeks from the veg patch or a hand-tied bouquet from one of the growing number of florists who source locally. Scatter single stems or petals into the grave as a tribute.

## Neolithic stone circle

The four and a half thousand year-old Neolithic stone-circle is dominated by two huge flankers that stand either side of a recumbent stone reputed to be the largest in Europe. Families are welcome to return at any time during the year to see the stones and explore the woodland.



## How it works

Natural burial is the most ecological funeral option, a thoughtful legacy for future generations. Being fully sustainable, the meadow will remain as it is now, permanent pasture - real, farmed countryside.

### In advance

- Visit the burial woodland and spend time there getting to know it and deciding whether it's right for you.
- Download an application form from our website, or phone us and we'll send you an information pack.
- You can pay for pre-purchases by standing order over 10 or 20 months.

### At the time of the funeral

- Complete an interment form to let us know your plans for the day so that we can help you achieve your wishes.
- You can make the arrangements and payments yourself or your funeral director can do this for you.
- Burials can take place between 10am-3pm. Weekends are also possible.

### Practicalities

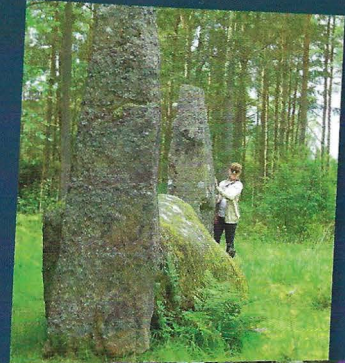
We recommend stout footwear as the ground may be uneven. A foldable chair is a good idea for those who find it difficult to stand. And remember, there's no such thing as bad weather, just the wrong sort of clothes...

## More time, space and meaning

Cothiemuir Hill Woodland Burial Ground is tranquil and private. An unhurried and gentle place to get away from it all.

Organise the day exactly as you'd like it. The meadow gives you the freedom to be yourselves completely and we will offer inspiration, support and guidance.

Afterwards it is a place of escape; somewhere quiet to take one step at a time, close to wildlife, with your memories, and view the changes through the seasons.






## Who you'll meet at the burial ground

Malcolm, 23rd Lord Forbes (Premier Lord of Scotland), or a member of the estate team, is able to meet you to walk you round and talk about what works well. They will also be there on the day of the funeral to greet you (tel: 01975 562524).

Nearby Castle Forbes has been the seat of Premier Lord of Scotland for almost six hundred years. Cothiemuir Hill and the burial ground, lie at the heart of the estate.





“ Peaceful, beautiful and somewhere we can comfortably visit as a family, including children and dog. ”

the South Wood area of the hill



Beech

Blackthorn

Ash

Rowan

Oak

Carpark

Entrance

Cothiemuir Hill

Pine Wood

Stone Circle

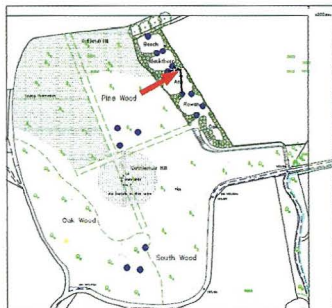
South Wood

## COTHIEMUIR HILL ABERDEENSHIRE

Grave Location Plan

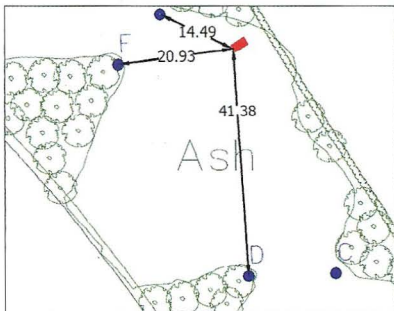
National Grid Coordinates: X: 361804 Y: 819998

Scan this QR Code into your smart phone to see the grave location on a digital map or enter the x + y co-ordinates at [www.gridreferencefinder.com](http://www.gridreferencefinder.com)



Cothiemuir Hill, Nr Alford

Do not scale. All figured dimensions to be checked on site.  
[www.aberdeennaturalheritage.co.uk](http://www.aberdeennaturalheritage.co.uk)



Forbes Estate

Leedam Natural Heritage

## Finding the spot

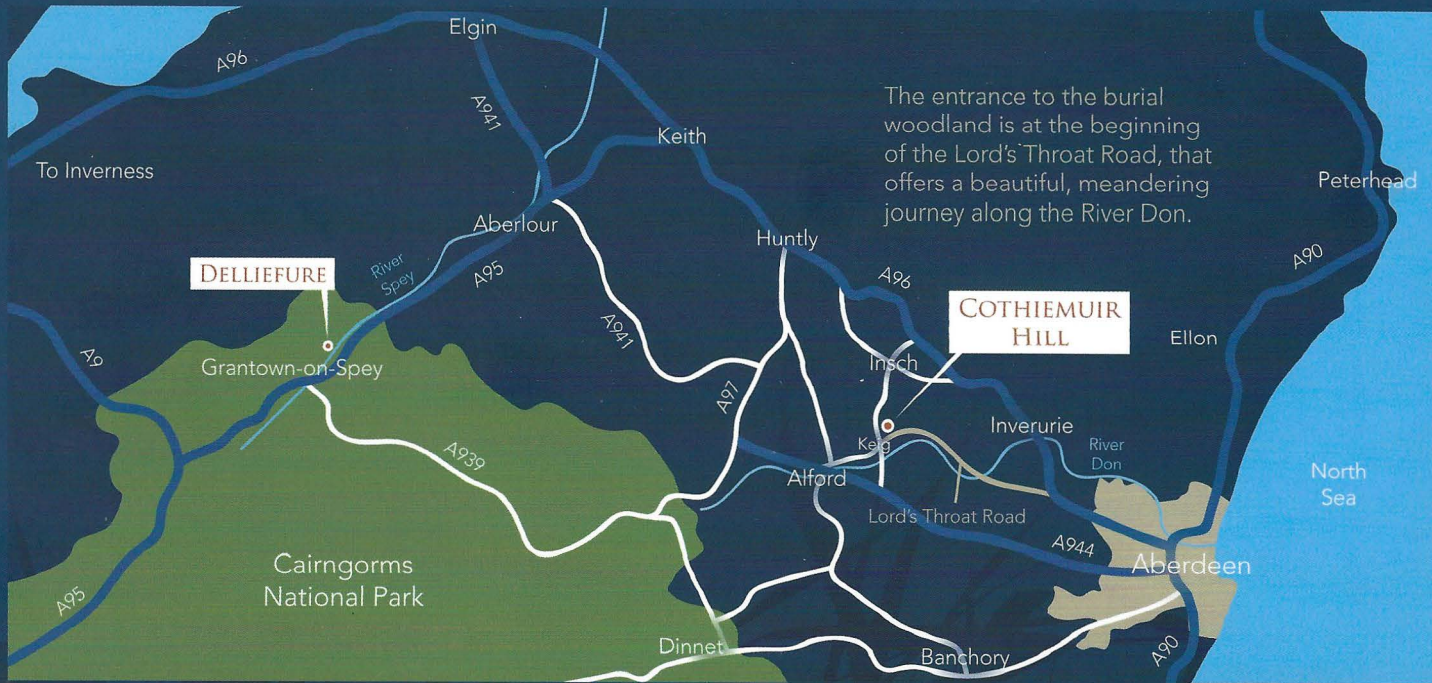
We have installed survey points, as shown below, at intervals around the burial ground. The locations of these survey points have been digitally mapped and the precise position of each grave is measured from these.

Using the digital maps on our computers and the measurements from the survey points, we are able to provide families with a plan to show the exact location of the grave and the measurements.

We also provide GPS coordinates and a QR code so that you can use your smartphone to point you in the right direction (visit our website for more information on this).

If you have any problems, just let us know and we'll help or flag the spot for you.





### Office

Leedam Natural Heritage  
 26 Agincourt Square  
 Monmouth, NP25 3BT  
 t. 01600 716438  
 e. cothiemuir@leedam.co.uk

### Custodian

Forbes Estate Office  
 t. 01975 562524  
 e. office@castle-forbes.com

### Burial Ground

Castle Forbes  
 Alford, Aberdeenshire  
 AB33 8BL



[www.aberdeennaturalburials.co.uk](http://www.aberdeennaturalburials.co.uk)

**Leedam**  
 NATURAL HERITAGE

Leedam Natural Heritage is a trading name of  
 Native Woodland Ltd, registered in Scotland  
 Company No. SC240278